



# Steel Piling Group | Case Study

Maritime | Highway | Rail | **Buildings** | Sustainability | Specialist Work

## Basement Car Park

Wembley, London



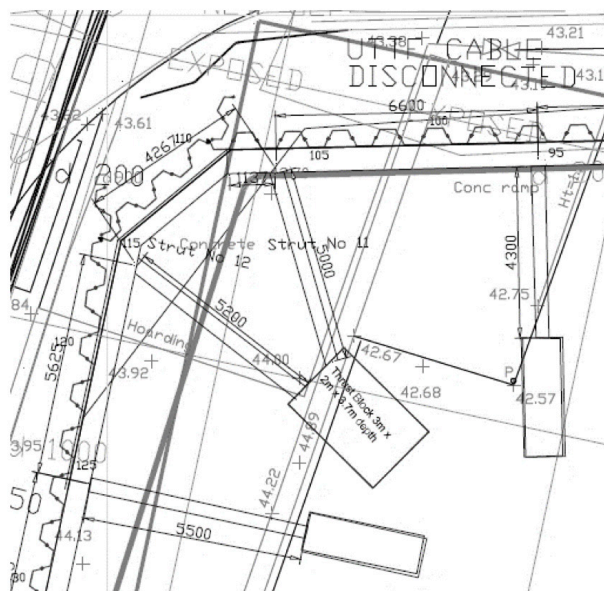
**Client** John Sisk and Sons  
**Contractor** Fussey Piling Limited  
**Location** Wembley, London  
**Scope** Permanent sheet piled retaining wall with heights up to 4.0m

**Piles** Arcelor Mittal PU18-1mm, PU22-1mm and PU28-1mm in lengths 7.0m long to 12.0m in Grade S355GP  
**Ground Conditions** Made Ground over London Clay  
**Value** £550k approx.  
**Completion Date** 2008

Fussey Piling were engaged by John Sisk to design and install a 288m run of steel sheet piling for a basement car park, close to Wembley Stadium. Steel sheet piling was identified as the most economical solution as it could be used as both the temporary and permanent works.

First, the sheet piles were driven using a "Silent & Vibration-Free" Kowan WP150 StillWorker, assisted by water jetting to improve the rate of pile installation. The flexibility of the attendant Sennebogen crawler crane allowed suitable piling platforms to be formed across the sloping site.

Fussey Piling returned to site to install temporary propping and weld the sheet pile clutches, providing a waterproof wall which was painted to the architect's specification.



Layer	Depth (m BGL)		Soil Description
	Top	Base	
1	0.0	0.0 to 4.0m	Made Ground
2	0.0 to 4.0m	Not Proven	London Clay

